

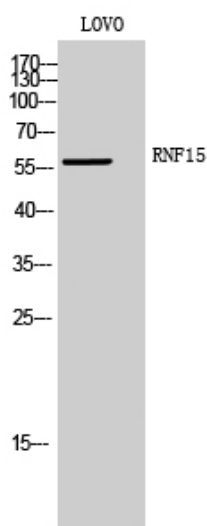


RNF15 Polyclonal Antibody

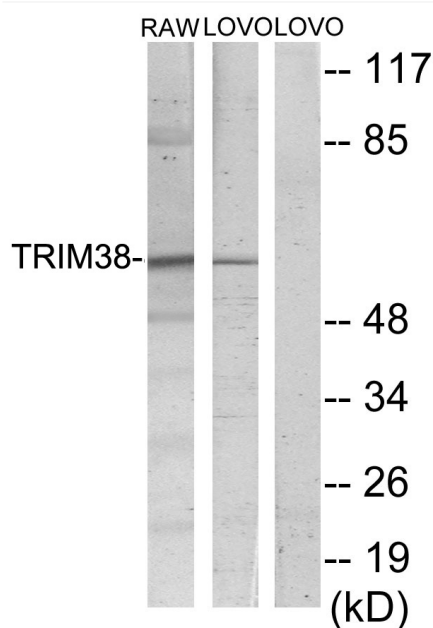
Catalog No	YP-Ab-01989
Isotype	IgG
Reactivity	Human;Mouse
Applications	WB;IHC
Gene Name	TRIM38
Protein Name	Tripartite motif-containing protein 38
Immunogen	The antiserum was produced against synthesized peptide derived from human TRIM38. AA range:161-210
Specificity	RNF15 Polyclonal Antibody detects endogenous levels of RNF15 protein.
Formulation	Liquid in PBS containing 50% glycerol, 0.5% BSA and 0.02% sodium azide.
Source	Polyclonal, Rabbit,IgG
Purification	The antibody was affinity-purified from rabbit antiserum by affinity-chromatography using epitope-specific immunogen.
Dilution	WB 1:500-2000;IHC-p 1:50-300
Concentration	1 mg/ml
Purity	≥90%
Storage Stability	-20°C/1 year
Synonyms	TRIM38; RNF15; RORET; Tripartite motif-containing protein 38; RING finger protein 15; Zinc finger protein RoRet
Observed Band	58kD
Cell Pathway	Cytoplasm .
Tissue Specificity	Ubiquitous.
Function	similarity:Contains 1 B box-type zinc finger.,similarity:Contains 1 B30.2/SPRY domain.,similarity:Contains 1 RING-type zinc finger.,tissue specificity:Ubiquitous.,
Background	This gene encodes a member of the tripartite motif (TRIM) family. The encoded protein contains a RING-type zinc finger, B box-type zinc finger and SPRY domain. The function of this protein has not been identified. A pseudogene of this gene is located on the long arm of chromosome 4. [provided by RefSeq, Jul 2012],
matters needing attention	Avoid repeated freezing and thawing!
Usage suggestions	This product can be used in immunological reaction related experiments. For more information, please consult technical personnel.



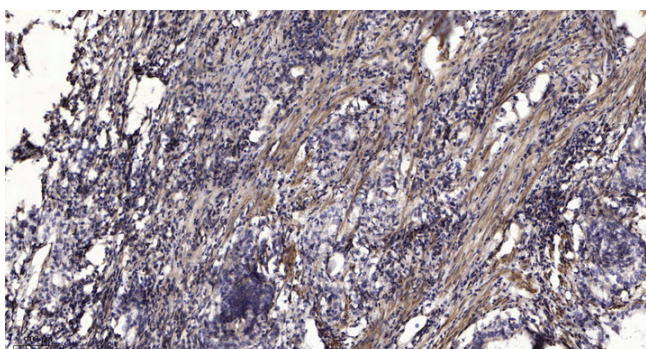
Products Images



Western Blot analysis of LOVO cells using RNF15 Polyclonal Antibody



Western blot analysis of lysates from LOVO and RAW264.7 cells, using TRIM38 Antibody. The lane on the right is blocked with the synthesized peptide.



Immunohistochemical analysis of paraffin-embedded human Gastric adenocarcinoma. 1, Antibody was diluted at 1:200(4° overnight). 2, Tris-EDTA, pH9.0 was used for antigen retrieval. 3, Secondary antibody was diluted at 1:200(room temperature, 45min).